

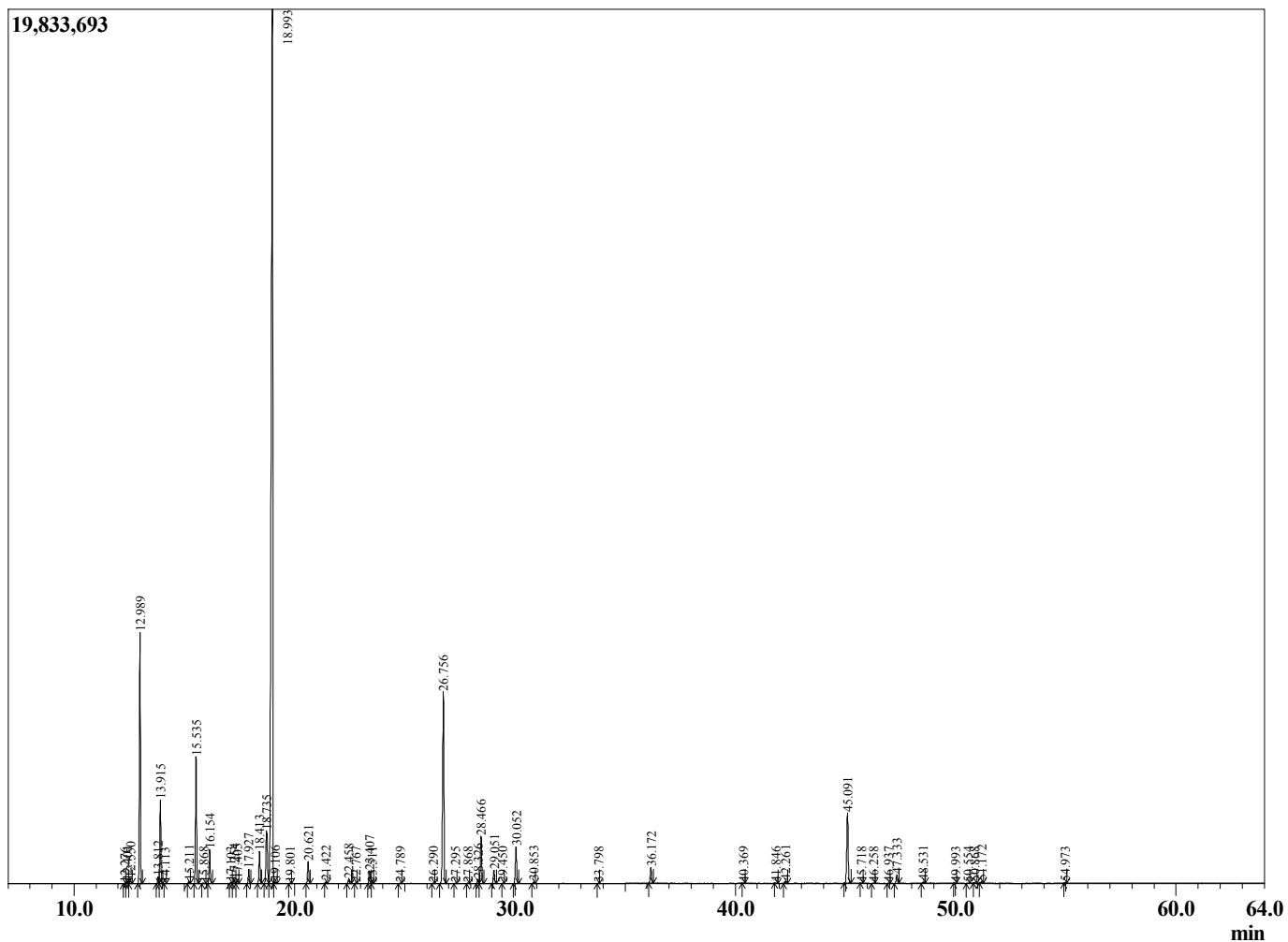
Sample Information

Sample Type : Essential Oil
 Sample Name : Rosmarinus officinalis

Rosemary Cineole
 Lot# MOR31-RT
 Country: Morocco



Chromatogram Rosmarinus officinalis



R.Time	Name	Area%
12.276	Hashishene	0.02
12.401	Tricyclene	0.08
12.550	alpha-Thujene	0.21
12.989	alpha-Pinene	9.58
13.812	alpha-Fenchene	0.25
13.915	Camphene	3.25
14.113	Verbenene	0.01
15.211	Sabinene	0.09
15.535	beta-Pinene	5.08
15.868	3-Octanone	0.04
16.154	Myrcene	1.36
17.103	Pseudolimonene	0.05
17.254	alpha-Phellandrene	0.17
17.405	3-Carene	0.18
17.927	alpha-Terpinene	0.60
18.413	para-Cymene	1.43
18.735	Limonene	2.96
18.993	1,8-Cineole	52.05
19.106	(Z)-beta-Ocimene	0.07
19.801	(E)-beta-Ocimene	0.03
20.621	gamma-Terpinene	1.00
21.422	trans-Sabinene hydrate	0.07
22.458	Terpinolene	0.20
22.767	para-Cymenene	0.01
23.407	Linalool	0.57
23.511	cis-Sabinene hydrate	0.03
24.789	endo-Fenchol	0.02
26.290	trans-Pinocarveol	0.01
26.756	Camphor	9.92
27.295	trans-beta-Terpineol	0.02
27.868	Isoborneol	0.02
28.326	Terpineol isomer	0.18
28.466	Borneol	2.28
29.051	Terpinen-4-ol	0.63
29.450	para-Cymen-8-ol	0.01
30.052	alpha-Terpineol	1.81
30.853	Verbenone	0.07
33.798	Unidentified	0.01
36.172	Bornyl acetate	0.80
40.369	alpha-Cubebene	0.01
41.846	alpha-Ylangene	0.02
42.261	alpha-Copaene	0.10
45.091	trans-beta-Caryophyllene	3.87
45.718	beta-Copaene	0.02
46.258	Unidentified	0.02
46.937	Unidentified	0.02
47.333	alpha-Humulene	0.47
48.531	trans-Cadina-1(6),4-diene	0.08
49.993	alpha-Murolene	0.02
50.554	beta-Bisabolene	0.02
50.868	gamma-Cadinene	0.04
51.172	delta-Cadinene	0.09
54.973	Caryophyllene oxide	0.04
		100.00